



INDOFINE Chemical Company, Inc.

121 Stryker Lane, Bldg. 30, Suite 1 • Hillsborough, NJ 08844 • U.S.A.

Phone: (908) 359-6778 • FAX: (908) 359-1179

website: www.indofinechemical.com

e-mail: chemical@indofinechemical.com

CERTIFICATE OF ANALYSIS

Catalog number: 19-513

Product Name: **4-CHLORO-2',5'-DIMETHOXYCHALCONE**

Lot Number: 0208171

Chemical Formula: C₁₇H₁₅ClO₃

Molecular Weight: 302.76

Melting Point: 82-85°C

Appearance: Bright Yellow powder

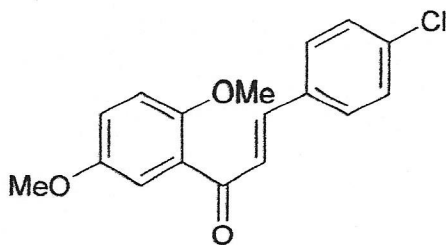
Solubility: Soluble in Chloroform

TLC: Hexane:Ethyl acetate (7:3)

NMR Spectrum: Enclosed (Confirms to the structure)

Storage: Cool dry place

Purity (HPLC): 99%





INDOFINE Chemical Company, Inc.

121 Stryker Lane, Bldg. 30, Suite 1 • Hillsborough, NJ 08844 • U.S.A.

Phone: (908) 359-6778 • FAX: (908) 359-1179

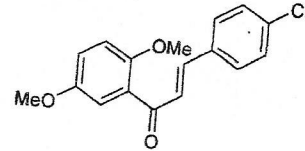
website: www.indofinechemical.com

e-mail: chemical@indofinechemical.com

HPLC ANALYSIS

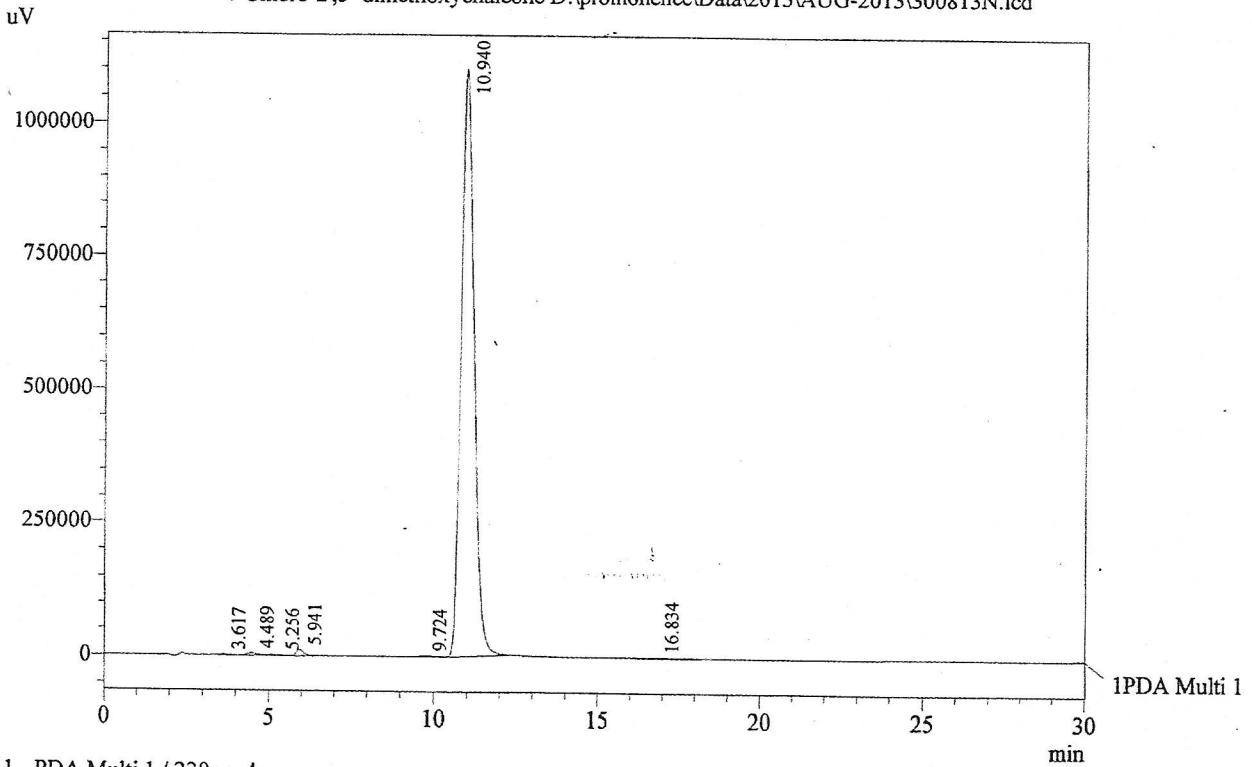
Acquired by : Sanjeev
Sample Name : 4-Chloro-2',5'-dimethoxychalcone
Sample ID : Lot No:0208171
Injection Volume : 20 uL
Data Filename : 300813N.lcd
Method Filename : Linear Isocratic.M.lcm

Catalog No.: 19-513
Product Name: 4-Chloro-2',5'-dimethoxychalcone
Lot No.: 0208171



Column : LUNA C-18(2), (250mm x4.6mm 5.0μ)
Flow : 1.000 mL/min.
Mobile Phase : A(30% of 0.05% TFA in water) B(70% of Acetonitrile)
Diluent : Acetonitrile

Chromatogram
4-Chloro-2',5'-dimethoxychalcone D:\promonence\Data\2013\AUG-2013\300813N.lcd



1 PDA Multi 1 / 230nm 4nm

PeakTable

PDA Ch1 230nm 4nm

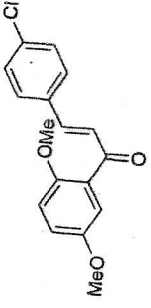
Peak#	Name	Ret. Time	Area	Area %	Relative Retention Time
1	RT:3.617	3.617	8900	0.03	0.33
2	RT:4.489	4.489	69747	0.23	0.41
3	RT:5.256	5.256	7135	0.02	0.48
4	RT:5.941	5.941	151890	0.50	0.54
5	RT:9.724	9.724	30599	0.10	0.89
6	4-Cl-2',5'-dimethoxychalcone	10.940	29852384	99.00	1.00
7	RT:16.834	16.834	31870	0.11	1.54
Total			30152526	100.00	



INDOFINE Chemical Company, Inc.
 121 STRYKER LANE
 BLDG. 30, SUITE 1
 HILLSBOROUGH, NJ 08844

Catalog No.: 19-513

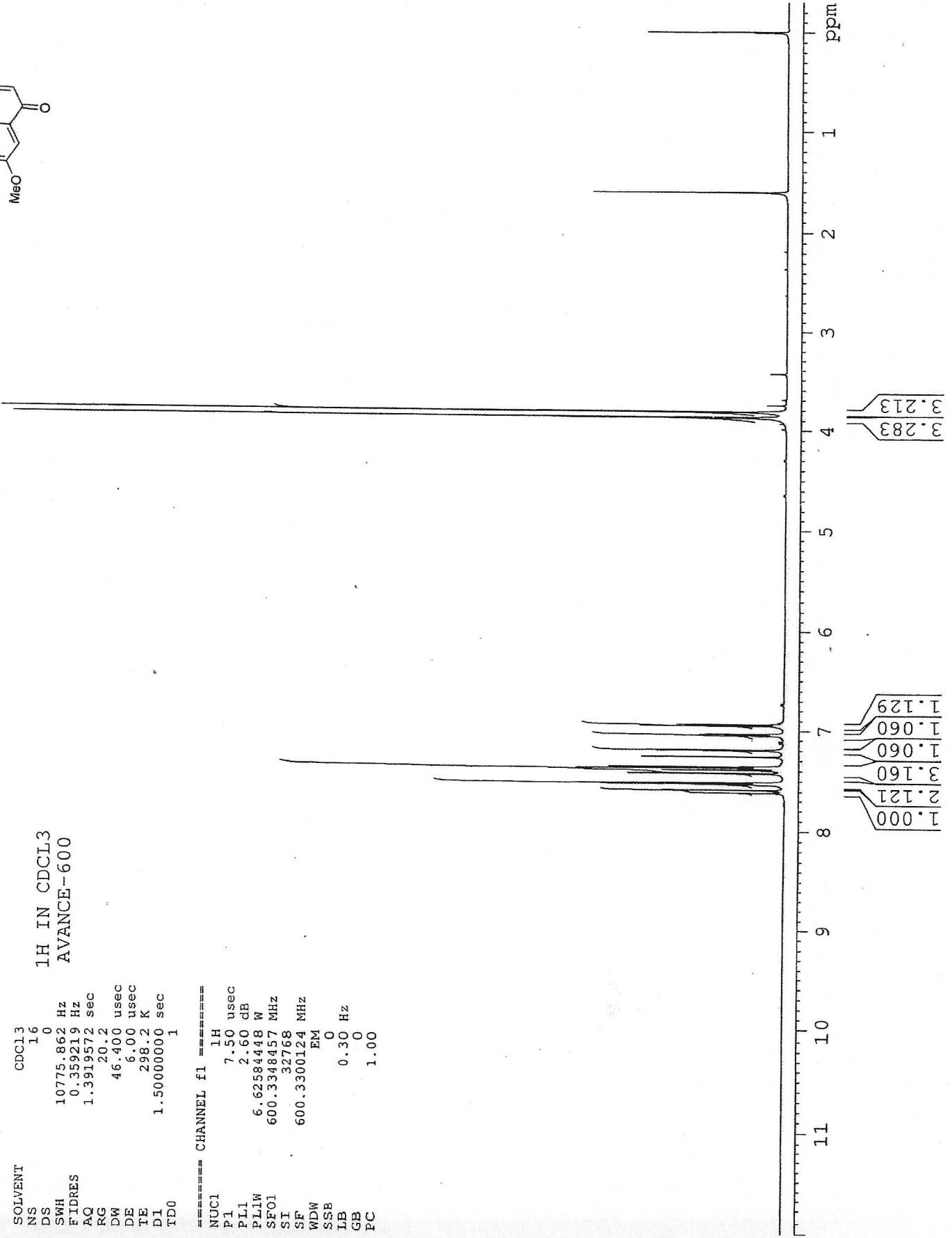
Product Name: 4-Chloro-2',5'-dimethoxychalcone
 Lot No.: 0208171



SOLVENT CDCL3
 NS 16
 DS 0
 SWH 10775.862 Hz
 FIDRES 0.359219 Hz
 AQ 1.3919572 sec
 RG 20.2
 DW 46.400 usec
 DE 6.00 usec
 IE 298.2 K
 D1 1.50000000 sec
 TD0 1

1H IN CDCL3
 AVANCE-600

===== CHANNEL f1 =====
 NUC1 1H
 P1 7.50 usec
 PL1 2.60 dB
 PLLW 6.62584448 W
 SF01 600.3348457 MHz
 SI 32768
 SF 600.3300124 MHz
 WDW EM
 SSB 0
 LB 0.30 Hz
 GB 0
 PC 1.00

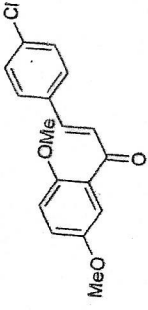




INDOFINE Chemical Company, Inc.
 121 STRYKER LANE
 BLDG. 30, SUITE 1
 HILLSBOROUGH, NJ 08844

Catalog No.: 19-513

Product Name: 4-Chloro-2',5'-dimethoxychalcone
 Lot No.: 0208171



1H IN CDCL3
 AVANCE-600

SOLVENT CDCL3
 NS 16
 DS 0
 SWH 10775.862 Hz
 FIDRES 0.359219 Hz
 AQ 1.3919572 sec
 RG 20.2
 DW 46.400 usec
 DE 6.00 usec
 TE 298.2 K
 D1 1.50000000 sec
 TDO 1

CHANNEL f1
 NUC1 1H
 P1 7.50 usec
 PL1 2.60 dB
 PL1W 6.62584448 W
 SF01 600.3348457 MHz
 SI 32768
 SF 600.3300124 MHz
 WDW EM
 SSB 0
 LB 0.30 Hz
 GB 0
 PC 1.00

